

The Kori Nuclear Power Plant in South Korea Uses Liqui-Cel® Membrane Contactors for Dissolved Oxygen Removal to Prevent Corrosion and Carbon 14 Production

Dissolved oxygen is a leading source of corrosion in water systems and it is carefully monitored and controlled in nuclear power plants. The Korean Electric Power Institute (KEPRI) has installed Liqui-Cel Membrane Contactors in the Kori nuclear power plant in South Korea. The membranes have been in operation since 2000 and have successfully met the rigorous demands of the nuclear power industry.

The Kori unit 1 plant is a Pressurized Water Reactor type reactor (PWR). The membranes are used to remove dissolved oxygen from water in the Primary Make-up Water Storage Tank. The water is continuously recirculated through the membrane contactor system in an effort to keep the dissolved oxygen level low. Dissolved oxygen is controlled to very low levels in this system in order to prevent corrosion of piping and equipment. Dissolved nitrogen is also controlled to prevent the formation of Carbon 14.

Kori Unit 1: Reducing Production of C14 and Replacing Hydrazine Injection

Kori unit 1 is a Pressure Water Reactor (PWR). The reactor is continuously fed boronated water which is used to control the neutron flux inside the reactor. The boron is continuously consumed and is replenished from the primary make-up water system.

The water in this primary feed tank is typically blanketed with nitrogen or covered with a rubber bladder to prevent oxygen from entering the storage tank. Before Liqui-Cel Contactors were installed, hydrazine was typically used to control the dissolved oxygen level in the DI water system feeding this tank. The breakdown of hydrazine and the nitrogen blanket increased the amount of dissolved nitrogen in the water.

Researchers at KEPRI have found that dissolved nitrogen in the reactor feed water leads to an increased production of carbon 14 in the power plant. The nitrogen forms carbon 14 when it absorbs neutrons in the reactor. Carbon 14 is a long-term environmental contaminant and the engineers sought ways to minimize its production at the plant.

Engineers at the facility investigated new ways to control the dissolved oxygen and nitrogen in the water feeding the reactor. Membrane contactors were installed because they simultaneously remove both dissolved nitrogen and oxygen from the water.

Liqui-Cel Membrane Contactor for Degassing

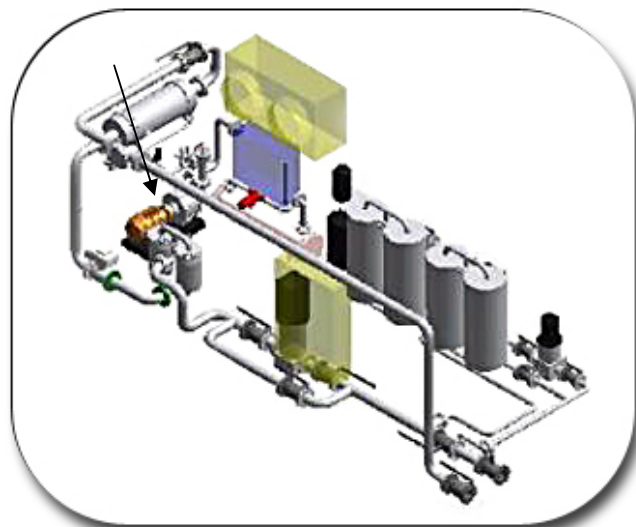


Figure 1 – Three Dimensional Front Diagram of Degassing Equipment at Kori NPP

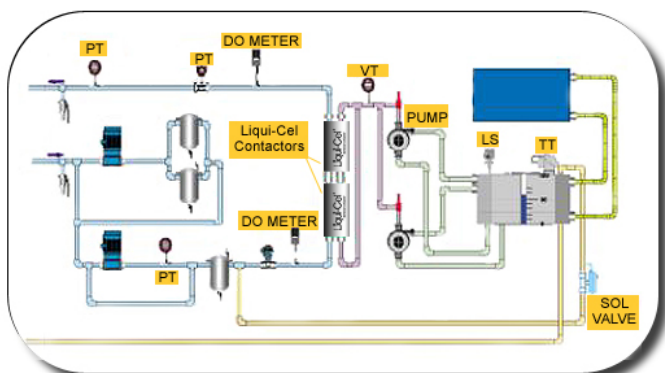


Figure 2 – P&ID of Degassing Equipment at Kori NPP

As illustrated in Fig. 2, the Kori plant uses a deep vacuum. This operating condition lowers the partial pressure of all gasses that are in contact with the water. This creates a driving force to remove all gasses that are dissolved in the water.

Two 10 x 28 Liqui-Cel Membrane Contactors remove 90% of gasses. Figure 3 lists the operating parameters.

Kori NPP System Efficiency

The membrane contactors offer an efficient chemical free process for removing dissolved gasses from water. The elimination of hydrazine from the process creates a safer working environment for the employees of the plant.

Additionally, the Contactor's ability to remove dissolved nitrogen as well as oxygen allows the plant to reduce the formation of C14 and make the plant more environmentally friendly as indicated in the efficiency rating in Figure 3.

To gain a better understanding of how the contactors actually work, you can view an animated product tour that demonstrates a cutaway view of the contactor. Go to www.liqui-cel.com

You can also request a system sizing for your specific application by going to the "contact us" section of our website.

Figure 3 Kori NPP Operating Parameters

End user	Kori Nuclear Power Plant
Module	Liqui-Cel [®] 10X28-X40 Membrane Contactors
Water Flow	34m ³ /h (150 gpm)
Temperature	50 °C (122 °F)
Vacuum	0.03 kgf/cm ² (23 torr)
Number of Contactors	2 in series
Purpose of System	DO Removal
Operation Mode	Vacuum
Efficiency	95.7 %

This product is to be used only by persons familiar with its use. It must be maintained within the stated limitations. All sales are subject to Seller's terms and conditions. Purchaser assumes all responsibility for the suitability and fitness for use as well as for the protection of the environment and for health and safety involving this product. Seller reserves the right to modify this document without prior notice. Check with your representative to verify the latest update. To the best of our knowledge the information contained herein is accurate. However, neither Seller nor any of its affiliates assumes any liability whatsoever for the accuracy or completeness of the information contained herein. Final determination of the suitability of any material and whether there is any infringement of patents, trademarks, or copyrights is the sole responsibility of the user. Users of any substance should satisfy themselves by independent investigation that the material can be used safely. We may have described certain hazards, but we cannot guarantee that these are the only hazards that exist.

Liqui-Cel, Celgard, SuperPhobic and MiniModule are registered trademarks and NB is a trademark of Membrana-Charlotte, A division of Celgard, LLC and nothing herein shall be construed as a recommendation or license to use any information that conflicts with any patent, trademark or copyright of Seller or others.



©2007 Membrana – Charlotte A Division of Celgard, LLC (TB47 Rev1_10_05)

Membrana – Charlotte
A Division of Celgard, LLC
13800 South Lakes Drive
Charlotte, North Carolina 28273
USA
Phone: (704) 587 8888
Fax: (704) 587 8585

Membrana GmbH
Oehder Strasse 28
42289 Wuppertal
Germany
Phone: +49 6126 2260 - 41
Fax: +49 202 6099 -750

Japan Office
Shinjuku Mitsui Building, 27F
1-1, Nishishinjuku 2-chome
Shinjuku-ku, Tokyo 163-0427
Japan
Phone: 81 3 5324 3361
Fax: 81 3 5324 3369

MEMBRANA
Underlining Performance
www.membrana.com
www.liqui-cel.com

A **POLYPORE** Company